

# Eagle IP Light

High quality subsea ethernet controllable light



The Eagle IP Light is a high illumination LED light for use on ROVs, AUVs, and other underwater lighting applications in up to 4000m of water depth. Topside control software allows the client to control up to 20 different lights individually or in groups. Using high-efficiency LEDs, the maximum illumination is 4000 lumens, controlled by full range dimming.

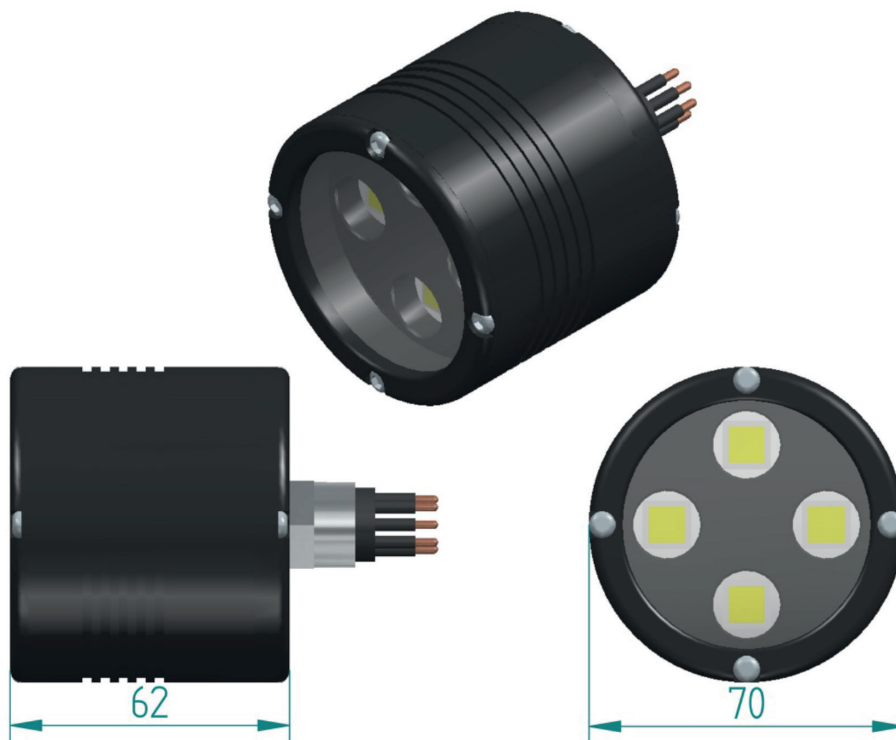
With a 90° beam angle for wide illumination in front of the ROV, the colour temperature is 6000-6500 Kelvin.

#### Key features include

- Hard anodised aluminium housing with sapphire lens
- Fully dimmable control via 10/100 Ethernet
- Internal temperature and voltage check for maximum light output and safety in air



Model	IPL/4000	IPL/6000
Window	Sapphire	
Housing Material	Anodised Aluminium	Titanium
Depth rating *	4000m	6000m
Power	20-30vDC@2A max	
Data	10/100 BaseT Ethernet	
Max Light output	6000lm	
Beam Angle	90° in water	
Connector	MCBH6M wet mate	



**OTAQ Offshore Ltd**  
 Crombie Lodge  
 Aberdeen Innovation Park  
 Campus Two  
 Aberdeen, AB22 8GU, UK

+44 (0)1224 673301  
 info@otaq.com

**otaq.com**